

WIRE PULL-OUT PANTRY - PREMIERE CHROME



Top & bottom slide covers for a finished look

NOTE: Items listed in BOLD special order only. Please allow 2-4 weeks.



FEATURES

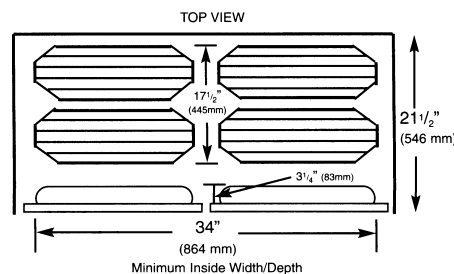
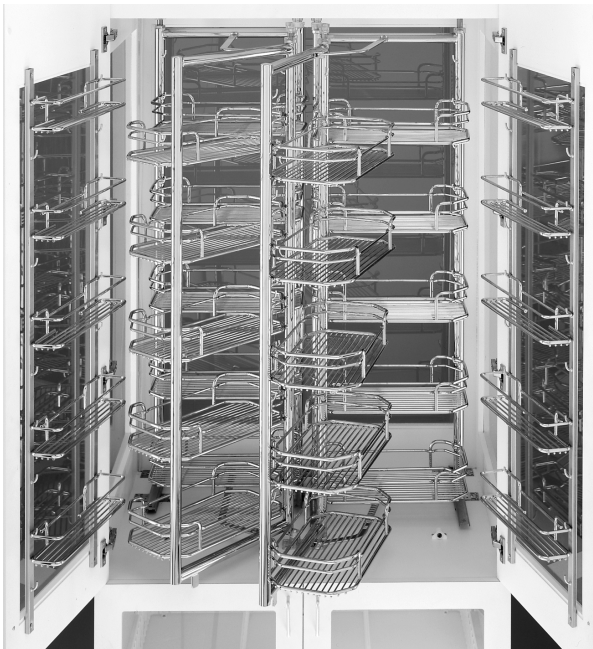
- 450lb. full-extension, heavy-duty, soft-close slide system.
- Micro-adjustment, door-mounting brackets included.
- Baskets slide into frame and lock into adjustable clips.

SPECIFICATIONS

- **Basket Dimensions:** 17-1/4" Deep x 3" High; Width varies by unit.
- **Set Contents:** Packaged complete with frame, baskets, door mounting brackets (optional), and full-extension slides.
- Not UPS-able, must ship by truck.

ORDER #	MIN. WIDTH	FRAME HEIGHT	# OF BASKETS	COLOR	PKG.	UNIT
5243-09 CR	8-7/8"	43-3/8" - 50-3/4"	4	CHROME	1	SET
5243-14 CR	14-3/4"	43-3/8" - 50-3/4"	4	CHROME	1	SET
5243-20 CR	20-5/8"	43-3/8" - 50-3/4"	4	CHROME	1	SET
5250-09 CR	8-7/8"	50-3/4" - 58-1/4"	4	CHROME	1	SET
5250-14 CR	14-3/4"	50-3/4" - 58-1/4"	4	CHROME	1	SET
5250-20 CR	20-5/8"	50-3/4" - 58-1/4"	4	CHROME	1	SET
5258-09 CR	8-7/8"	58-1/4" - 65-3/4"	5	CHROME	1	SET
5258-14 CR	14-3/4"	58-1/4" - 65-3/4"	5	CHROME	1	SET
5258-20 CR	20-5/8"	58-1/4" - 65-3/4"	5	CHROME	1	SET
5273-09 CR	8-7/8"	73-5/8" - 80-3/4"	6	CHROME	1	SET
5273-14 CR	14-3/4"	73-5/8" - 80-3/4"	6	CHROME	1	SET
5273-20 CR	20-5/8"	73-5/8" - 80-3/4"	6	CHROME	1	SET

CHEF'S ROLL-OUT PANTRY WITH DOOR STORAGE - PREMIERE CHROME



- **5222-21CR Set Contents:** Pantry, swing-out frame, 20 large chrome baskets, 2 sets of 44" door mount brackets, door storage baskets.

SPECIFICATIONS

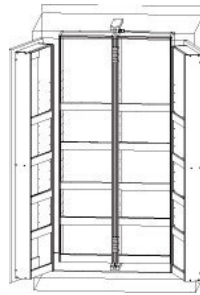
- **Frame Height:** 49-1/4"-51-3/4".
- **Depth w/ door baskets:** 21-1/2"
- **Width:** 34".
- **Door Storage Baskets:** 2-3/8"H x 2-3/4"D x 12-3/8"W.
- **Large Pantry Baskets:** 3"H x 7-7/8"D x 14-15/16"W.
- **Standards:** 44-1/8"L.
- **Weight:** 162 lbs; Ships by freight truck only;

ORDER #	DESCRIPTION	COLOR	PKG.	UNIT
5222-21CR	CHEF'S ROLL-OUT PANTRY	CHROME	1	SET

More kitchen organizers available online.



CHEF'S PANTRY SYSTEMS



Double Pantry



Single Pantry



Upper Door System

- Not only beautiful but they are heavy duty as well.
- Our double pantry, single pantry or upper door provide ideal storage right where you need it
- Highly versatile and allow for many different shelving configurations.

- **P0251DNL1 Set Includes:**
2ea swing-out units: 51-1/2"H x 12-1/4"W x 7"D
2ea door units: 51-1/2"H x 12-1/4"W x 3-3/4"D
- **P0252DNL1 Set Includes:**
1ea swing-out unit: 51-1/2"H x 12-1/4"W x 7"D
1ea door units: 51-1/2"H x 12-1/4"W x 3-3/4"D
- **P0262DNL1 Set Includes:**
2ea door units: 18-1/2"H x 12-1/4"W x 3-3/4"D
• Center Panel, not Included. 54-1/2"H x 3/4"W x 7"D



ORDER #	DESCRIPTION	COLOR	PKG.	UNIT
P0251DNL1	DBL. PANTRY SYSTEM	MAPLE	1	SET
P0252DNL1	SGL. PANTRY SYSTEM	MAPLE	1	SET
P0262DNL1	UPPER DOOR SYSTEM	MAPLE	1	SET

DOOR STORAGE SHELF SETS



- May be mounted with screw-in clips (included) or on adjustable standards (sold separately).
- **Shelf Set:** 2 polymer shelves w/ screw-in clips.
- **Door Standards:** 2 door storage standards w/shelf clips.



ORDER #	SIZE	DESCRIPTION	COLOR	PKG.	UNIT
6232-08-11-52	7-7/8"	SHELF SET	WHITE	1	SET
6232-14-11-52	13-3/4"	SHELF SET	WHITE	1	SET
6232-20-11-52	19-3/4"	SHELF SET	WHITE	1	SET
6232-26-4528-5	26"	DOOR STANDARDS	ALUM.	1	SET
6232-58-4528-5	58"	DOOR STANDARDS	ALUM.	1	SET

DOOR STORAGE TRAYS - WOOD



- May be mounted with screw-in clips (included) or on adjustable standards (sold separately).
- **Tray Contains:** 1 birch/maple wood storage tray with chrome rails and screw-in clips.
- **Door Standards Contain:** 2 aluminum door storage standards with adjustable shelf clips.

ORDER #	SIZE	DESCRIPTION	COLOR	PKG.	UNIT
4231-14-52	14"	STORAGE TRAY	WOOD	1	EACH
4231-20-52	20"	STORAGE TRAY	WOOD	1	EACH
6232-26-4528-52	26"	DOOR STANDARDS	ALUM.	1	SET
6232-58-4528-52	58"	DOOR STANDARDS	ALUM.	1	SET

BASE CABINET FILLERS - WOOD CLASSICS



- Add storage space behind those decorative panels with the new base filler cabinet.
- Features adjustable shelves with chrome rails and full-extension ball-bearing slides.
- **Contents:** 1 Completely assembled organizer with full-extension slides and adjustable shelves.



ORDER #	HEIGHT	WIDTH	DEPTH	FINISH	PKG.	UNIT
432-BF-3C	30"	3"	23"	WOOD	1	SET
432-BF-6C	30"	6"	23"	WOOD	1	SET
432-BF-9C	30"	9"	23"	WOOD	1	SET

WALL CABINET FILLERS - WOOD CLASSICS



- Add storage space behind those decorative panels with the new wall filler cabinet.
- Features adjustable shelves with chrome rails and full-extension ball-bearing slides.
- **Contents:** 1 Completely assembled organizer with full-extension slides and adjustable shelves.

ORDER #	HEIGHT	WIDTH	DEPTH	FINISH	PKG.	UNIT
432-WF-3C	30"	3"	11-1/8"	WOOD	1	SET
432-WF-6C	30"	6"	11-1/8"	WOOD	1	SET

KITCHENMATE BASE PANTRY FILLER



- Unique magnetic Push Latch, ours don't pull out, they push in.
- 100 lb Full-Extension Ball Bearing Slides
- All wood construction, shelf fences are solid hard rock maple, *not* veneers.

ORDER #	HEIGHT	WIDTH	DEPTH	FINISH	PKG.	UNIT
P0463MNL1	30"	3"	24"	MAPLE	1	SET
P0466MNL1	30"	6"	24"	MAPLE	1	SET

KITCHENMATE WALL PANTRY FILLER



- Unique magnetic Push Latch, ours don't pull out, they push in.
- 100 lb Full-Extension Ball Bearing Slides
- All wood construction, shelf fences are solid hard rock maple, *not* veneers.

ORDER #	HEIGHT	WIDTH	DEPTH	FINISH	PKG.	UNIT
P0473MNL1	30"	3"	12"	MAPLE	1	SET
P0476MNL1	30"	6"	12"	MAPLE	1	SET

PULL-OUT WALL ORGANIZERS - WOOD CLASSICS



REV-A-SHELF®
Wood Classics™

- Patented tri-slides for complete stability and easy installation.
- Includes adjustable door mount brackets providing up to 5 inches of flexibility for trouble-free installation on any door style, 3 adjustable shelves and up to 5 surface areas by utilizing the top of the unit to provide another shelf in taller 36in. or 42in. applications.
- **Contains:** Pull-out shelving system, 3 adjustable shelves with chrome rails, full-extension tri-slide mechanism.

ORDER #	HEIGHT	WIDTH	DEPTH	FINISH	PKG.	UNIT
448-WC-05C	26-1/4"	5"	10-3/4"	WOOD	1	SET
448-WC-08C	26-1/4"	8"	10-3/4"	WOOD	1	SET

PULL-OUT BASE ORGANIZERS - WOOD CLASSICS



REV-A-SHELF®
Wood Classics™

- Door mount design, new tri-slide full-extension ball-bearing slides, micro adjustment screw for door alignment and rub bushings for stability.
- Features adjustable shelves with chrome rails to help keep everything in its place.
- **Contains:** Pull-out shelving system, 3 adjustable shelves with chrome rails, full-extension tri-slide mechanism and rub bushings.

ORDER #	HEIGHT	WIDTH	DEPTH	FINISH	PKG.	UNIT
448-BC-05C	25-1/2"	5"	22-1/2"	WOOD	1	SET
448-BC-08C	25-1/2"	8"	22-1/2"	WOOD	1	SET
448-BC-11C	25-1/2"	11"	22-1/2"	WOOD	1	SET

NEW!

PULL-OUT BASE ORGANIZERS - (SIDE MOUNT)



548-06



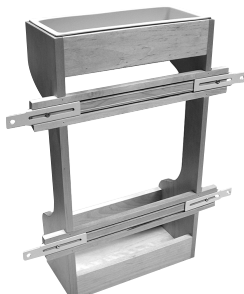
548-10

REV-A-SHELF®

- **548-06 Contains:** base organizer w/reversible ball bearing slides and 12-1/2" extension & door mounting capability. Mounting hardware. Available in white or chrome.
- **548-10 Contains:** reversible base organizer with 16" slides & mounting hardware.

ORDER #	HEIGHT	WIDTH	DEPTH	FINISH	PKG.	UNIT
548-06	19-1/2"	5-1/2"	19-3/8"	WHITE	1	EACH
548-06CR	19-1/2"	5-1/2"	19-3/8"	CHROME	1	EACH
548-10	18"	9-3/4"	16"	WHITE	1	EACH

SINK BASE DOOR STORAGE - WOOD CLASSICS



rear view of adjustable door mount brackets

REV-A-SHELF®
Wood Classics™

- Features a polymer tray on the top shelf with new adjustable door mount brackets that provide installation flexibility up to 5"

ORDER #	WIDTH	HEIGHT	DEPTH	MIN. OPENING	PKG.	UNIT
4SBSU-15	10-1/2"	18-1/2"	5"	11-5/8"	1	EACH
4SBSU-18	13-1/2"	18-1/2"	5"	14-3/8"	1	EACH
4SBSU-21	16-1/2"	18-1/2"	5"	17-1/4"	1	EACH

SINGLE ROLL-OUT CHROME BASKET



- Features full-extension ball bearing slides, heavy-duty chrome plated frames, & easily installs with 4 screws.

ORDER #	HEIGHT	WIDTH	DEPTH	FINISH	PKG.	UNIT
5-WB1-0918-CR	7"	8-3/8"	18"	CHROME	1	EACH
5-WB1-1218-CR	7"	11-3/8"	18"	CHROME	1	EACH
5-WB1-1520-CR	7"	14-3/8"	20"	CHROME	1	EACH
5-WB1-1222-CR	7"	11-3/8"	22"	CHROME	1	EACH
5-WB1-1522-CR	7"	14-3/8"	22"	CHROME	1	EACH
5-WB1-1822-CR	7"	17-3/8"	22"	CHROME	1	EACH
5-WB1-2122-CR	7"	20-3/8"	22"	CHROME	1	EACH

DOUBLE ROLL-OUT CHROME BASKETS



- Features full-extension ball bearing slides, heavy-duty chrome plated frames, & easily installs with 4 screws.

ORDER #	HEIGHT	WIDTH	DEPTH	FINISH	PKG.	UNIT
5-WB2-0918-CR	19"	8-3/8"	18"	CHROME	1	EACH
5-WB2-1218-CR	19"	11-3/8"	18"	CHROME	1	EACH
5-WB2-1222-CR	19"	11-3/8"	22"	CHROME	1	EACH
5-WB2-1522-CR	19"	14-3/8"	22"	CHROME	1	EACH
5-WB2-1822-CR	19"	17-3/8"	22"	CHROME	1	EACH
5-WB2-2122-CR	19"	20-3/8"	22"	CHROME	1	EACH

UNDER SINK BASKET



- Carrier handle welded to base basket which allows taller items to be stored under removable top basket.
- Basket can be installed to avoid plumbing pipes on either side.
- NOTE: Add 3/4" to width requirement for frameless cabinets.

ORDER #	HEIGHT	WIDTH	DEPTH	FINISH	PKG.	UNIT
USB11TM-W	10-1/4"	11"	18-7/8"	WHITE	1	EACH
USB14TM-W	10-1/4"	14"	18-7/8"	WHITE	1	EACH

SLIDES FOR CUSTOM PULL-OUTS



- Ball-bearing bottom mount slides.

ORDER #	LENGTH	COLOR	PKG.	UNIT
BM-3832-18W-52	18"	WHITE	1	PR
BM-3832-20W-52	20"	WHITE	1	PR
BM-3832-22W-52	22"	WHITE	1	PR

More kitchen organizers available online.



PULL-OUT SHELVES - PREMIERE CHROME



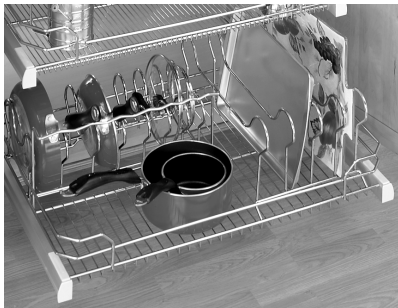
BOTTOMMOUNT DOORMOUNT SIDEMOUNT



- Now with soft-close, full-extension ball-bearing slides.
- Chrome plated steel spacers add approx. 7/8" to 1-1/4" adjustability per side.
- 4-3/4" high; 22" deep.
- Hardware Upgrade: Now includes adjustable extender brackets that attach to the door mount brackets eliminating the need for sub-door panels.
- **Contains:** Basket, 75lb. cabinet member slides, side mount spacers, feet for bottom mounting, door mount brackets.

ORDER #	BASKET WIDTH	MIN CAB. OPENING	MIN WIDTH W/SPACERS	MAX WIDTH W/SPACERS	FINISH	PKG.	UNIT
5330-12CR	11-1/8"	11-3/8"	12-1/8"	13-3/4"	CHROME	1	SET
5330-15CR	14-1/8"	14-3/8"	15-1/8"	16-3/4"	CHROME	1	SET
5330-21CR	20-1/8"	20-3/8"	21-1/8"	22-3/4"	CHROME	1	SET
5330-33CR	32-1/8"	32-3/8"	33-1/16"	34-3/4"	CHROME	1	SET

COOKWARE ORGANIZER - PREMIERE CHROME



- **Contains:** Cookware Organizer, bottom & side mount brackets with the full-extension, soft-close slides. Chrome plated adjustable side mount spacers, fully adjustable door mount brackets.
- **5389-33CR** - Also included: seven dividers for sauce pans or lids and a basket space for storing large pots with an additional large divided section for baking pans, cutting boards or serving dishes.

ORDER #	WIDTH	HEIGHT	DEPTH	PKG.	UNIT
5389-33CR	32-1/8"	9-1/2"	22"	1	SET

DROP-IN COOKWARE ORGANIZER - PREMIERE CHROME



- Convert disorderly drawers into fully functional storage pull-outs with the new drop-in cookware organizer.
- Flexible design to fit base 24 drawer sizes and larger with easy 4-screw installation.
- Chrominox coated.

ORDER #	WIDTH	HEIGHT	DEPTH	PKG.	UNIT
5389-CR	17-1/2"	8-3/4"	12"	1	SET

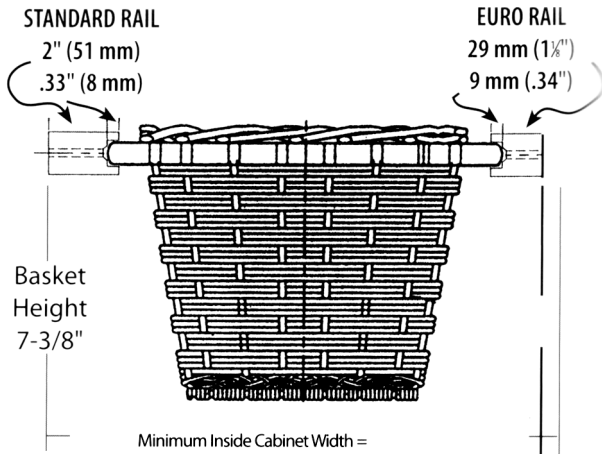
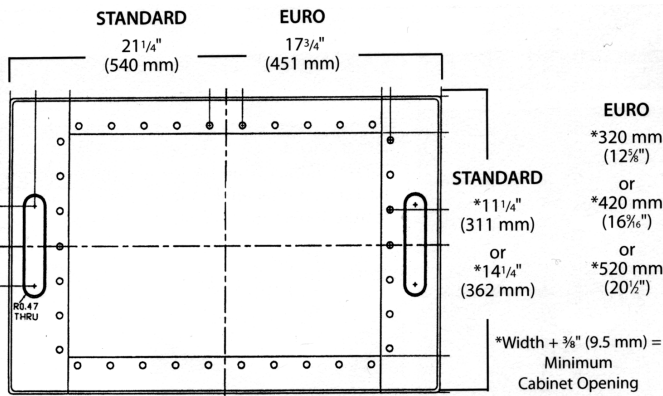
DRAWER PEG SYSTEM



- Endlessly changeable pegboard system creates instant drawer organization.
- Constructed of UV-Cured maple; Trim-to-fit design.
- **Set Contents:** Peg board and push-in pegs. (2421 includes: 9ea pegs; 3021: 12ea pegs; 3921: 16ea pegs).

ORDER #	WIDTH	HEIGHT	DEPTH	PKG.	UNIT
4DPS-2421	24-1/4"	6-5/8"	21-1/4"	1	SET
4DPS-3021	30-1/4"	6-5/8"	21-1/4"	1	SET
4DPS-3921	39-1/4"	6-5/8"	21-1/4"	1	SET
4DPS-PEG-4	ADDITIONAL PEGS - each			4	EACH

PULL-OUT RATTAN BASKETS



Minimum Inside Cabinet Width = 1" (25.4 mm) Larger than Basket Width
Maximum Inside Cabinet Width = 3.34" (85 mm) Larger than Basket Width
Euro Maximum Inside Cabinet Width = 1.57" (39.9 mm) Larger than Basket Width



ORDER #	HEIGHT	WIDTH	DEPTH	PKG.	UNIT
4WB-15I	7-3/8"	11-1/4"	21-1/4"	1	EACH
4WB-18I	7-3/8"	14-1/4"	21-1/4"	1	EACH
4WB-32OI	188mm	320mm	451mm	1	EACH
4WB-42OI	188mm	420mm	451mm	1	EACH
4WB-52OI	188mm	520mm	451mm	1	EACH

- Rattan baskets with birch frames will add a European look to your cabinets while storing fresh fruits and vegetables.
- **Set includes:** Basket, clear plastic basket liner & 2 side mount rails.

STATIC RATTAN BASKETS



- These attractive, functional baskets increase functionality while enhancing kitchen design.
- Includes a 100% cotton off-white cloth liner.



ORDER #	HEIGHT	WIDTH	DEPTH	PKG.	UNIT
4WB-411-4	4-1/2"	4-1/2"	11-1/4"	1	EACH
4WB-421-4	4-1/2"	4-1/2"	21-1/4"	1	EACH
4WB-1419-4	11-1/4"	14-1/2"	19-1/4"	1	EACH
4WB-1723-4	11-1/4"	17-1/2"	22-3/4"	1	EACH

PULL-DOWN SHELVING SYSTEM - PREMIERE CHROME



FEATURES

- 2-tier pull-down shelf that brings hard-to-reach items down 10" while pulling out 14-1/4" from the cabinet.
- Unique gas assisted lifting/lowering mechanism provides stability through the entire range of motion.
- Includes side and bottom mount brackets.

SPECIFICATIONS

- **Minimum Opening:** 20-1/4"W x 10-1/2"D x 18-5/16"H
- **Set Contents:** Shelving unit, mounting brackets & instructions.

ORDER #	MIN. OPENING	FINISH	PKG.	UNIT
5PD-24CR	20-1/4"W	CHROME	1	SET